



# MAETECH

YOUR DIGITAL TRANSFORMATION PARTNER



## WHO WE ARE?

Founded in 2009, our Pakistan-based IT company has expanded its presence to the Gulf region, notably in the UAE and KSA. Our strengths lie in delivering top-notch services in the IT sector; encompassing Digital Solutions, IT Consultancy, Project Management and Data Science. Our capabilities extend to ERP Systems, Purpose-built Digital Platforms, Business Process Re-engineering (BPR) and AI-driven dashboards leading to Decision Making Systems.

The MAE Tech family is home to the most skilled experts and professionals in the field.



## MISSION AND VISION

MAE Tech is a driving force behind our Customers' Achievements by delivering Holistic, Purpose-built and complete IT solutions. These solutions not only boost agility but also empower Customers to excel in the competitive realm by adopting the best global practices to tackle challenges and complexities of the business landscape.



**65+**  
Customers



**100+**  
Resources



**15+**  
Years

# OUR EXPERTISE

---



## IT Solutions

- ▶ UI/UX
- ▶ Digital Platforms
- ▶ Mobile Applications
- ▶ Quality Assurance
- ▶ Technical Documentation
- ▶ Cyber Security
- ▶ ERP's
- ▶ CRM's



## Artificial Intelligence

- ▶ Decision Making Systems
- ▶ Predictive Analysis
- ▶ Comparative Analysis
- ▶ Data Science
- ▶ Data Engineering
- ▶ Data Modeling



## IT Consultancy & Project Management

- ▶ IT Consultancy
- ▶ BPR
- ▶ Project Management
- ▶ Technical Trainings



## Marketing

- ▶ Search Engine Optimization
- ▶ Social Media Handling
- ▶ Social Media Campaigns
- ▶ Marketing Strategy and Plans

# OUR TECH STACK EXPERTISE



## Software Development

### UI/UX Design

Figma  
Adobe XD  
Adobe Photoshop  
Adobe Illustrator  
Adobe After Effects

### UI/UX Development

ReactJS  
Angular  
Vue.js  
HTML / CSS  
Java Script / JQuery  
Webix.js

### Software Development

Node.js  
Python  
Dot Net  
Java  
PHP  
Laravel

### Mobile Apps

iOS  
Android  
Flutter  
React Native



## AI/ML/Analytics

Tableau  
PowerBI  
QuickSight  
Python



## ERP/CRM/Automation

MS Dynamics 365  
Oracle  
Odoo  
BPR  
Customised Solutions



## e-Commerce & Databases

WordPress  
Drupal  
Shopify  
My SQL/ SQL  
Oracle  
Mongo DB  
AWS

## SOME OF OUR HAPPY CLIENTS



**Alphakernel**



شركة بسام التجارية  
**BASSAM TRADING COMPANY**



وزارة الصحة  
Ministry of Health

**monily**



الاتصالات السعودية

arthur+  
lawrence



IMPERIAL  
LOCUM  
MEDICAL STAFFING AGENCY



INTUITIVE HEALTH  
LOCUM STAFFING AGENCY



AUGMENTECK  
IMPETUS FOR NEW ALLIANCE



**BINARY**  
TECHNOLOGIES & SOLUTIONS



**LAXYCONE**  
BUSINESS CONSULT



National Officers Academy  
**NOA**  
Where Dreams Come True



**CRONUS**  
DIGITAL

# FLAGSHIP PROJECTS

Provided here are glimpses of Significant Projects executed by MAE Tech and its core team members.

## Learning Management System (LMS)



A Learning Management System tailored for the National Officers Academy (NOA), along with a Web Portal and Mobile Application has been successfully Developed and Deployed. The System includes distinct modules for Students, Faculty, Admin & Accounts, e-Vouchers, Job Portal, Time Table Management, Online Exams & Evaluation System, e-library, Campuses base Management on Admin side, Online Registrations, Online Classes, Online Communication System (Chat), e-Studio, Media Centre, and various other functionalities.

Team

PM	BA	UI/UX	Frontend
Backend	DB	QA	DevOps
Android Dev	iOS Dev		





# Sales CRM



A Sales CRM tailored for the Bassam Trading Company, KSA with a Web Portal and Mobile Application has been successfully Developed and Deployed. It has four main Modules i.e:

## Sales CRM

- Sales Module for Sales Representative's.
- Reporting Module for Management to create and download reports with custom filters option.
- Self-Assessment Module for Sales Representative's.
- User Roles and Permissions.
- Mobile Application for all roles in Sales CRM

## Executive Dashboards

Power BI Executive Dashboards including:

- Statistical Overview.
- Financial Trends.
- Department level details.
- Assets & Liabilities Details.
- Cost breakup & Revenue Flow.

## Project Management

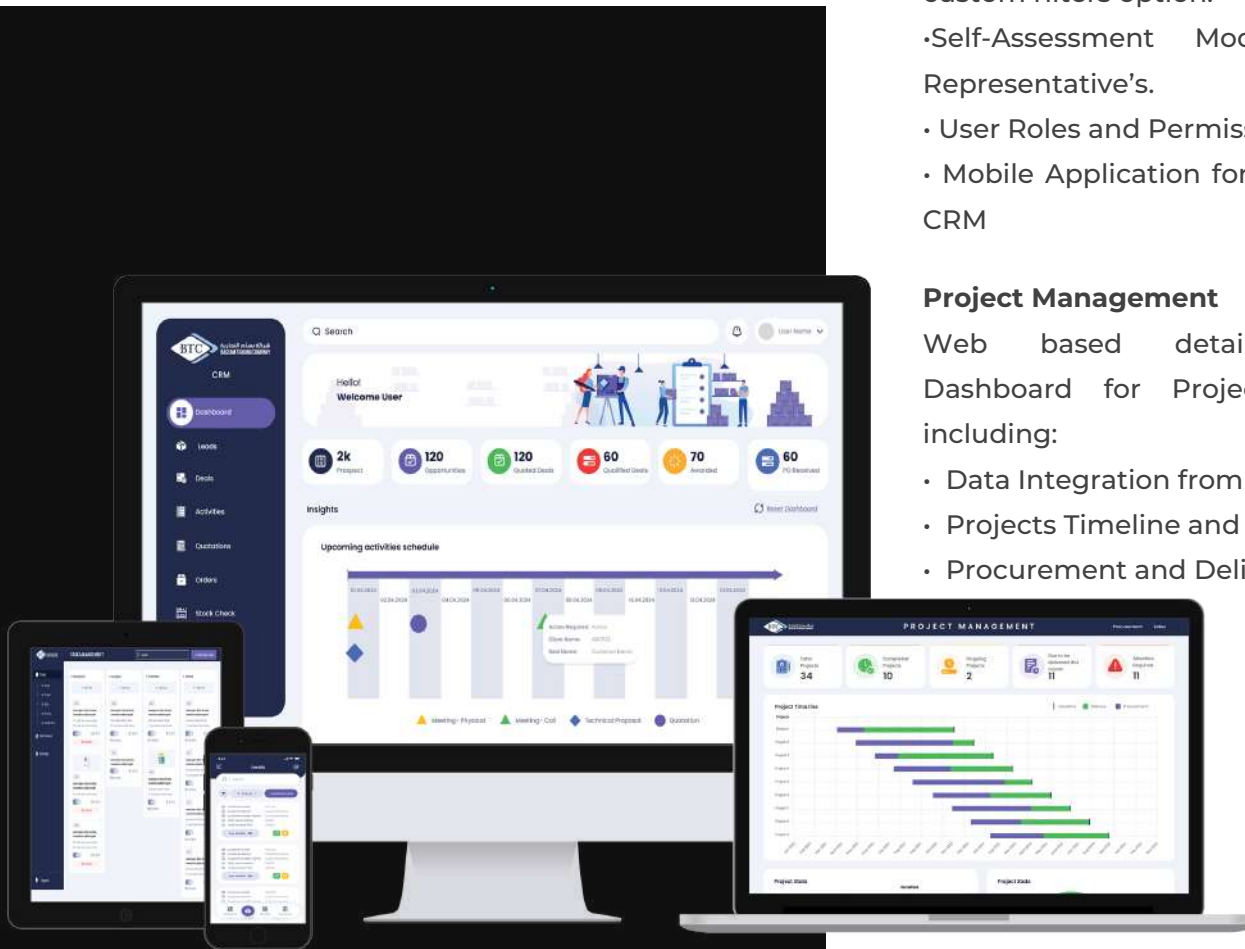
Web based detailed Interactive Dashboard for Project Management including:

- Data Integration from SAP.
- Projects Timeline and Health.
- Procurement and Delivery mapping.

## Task Management

Web based Task Management Module integrated predefined Tasks, once any Lead is locked in CRM including:

- Auto Assignment from System.
- Checklist or To-Do List.
- User Interface with Task Status.
- Interactive Dashboard for Management.



Team	PM	BA	SA	UI/UX	Frontend	Backend
	DB	Android Dev	iOS Dev	DevOps	QA	



Team	PM	BA	SA	UI/UX	Frontend
	Backend	DB	Android Dev		
	iOS Dev	DevOps	QA		

## Mortuary Management System



This digital platform is engineered to provide real-time visibility into the movements and locations of deceased individuals during Hajj and Umrah. Its primary objective is to enhance the management and coordination of these individuals, ensuring they are treated with dignity and efficiency. Initially, the platform is proposed as a pilot project specifically for the Hajj Operations in 2024.

The platform encompasses four distinct roles, each with dedicated functionalities:

1. Authorized Personal (Mobile App)
2. Transportation (Mobile App)
3. Processing Centre (Mobile App)
4. Admin (Web Portal)







## e-Campus



An online Educational Hub that replicates the Operations of a Complete Educational Institute. Students, Faculty and Admin side possess dedicated User Roles & Accounts which allowed them to carry out their specific duties more effectively. The platform offers both recorded and live classes and features a Central Repository of Online Lectures for students who may need to catch up or revise.

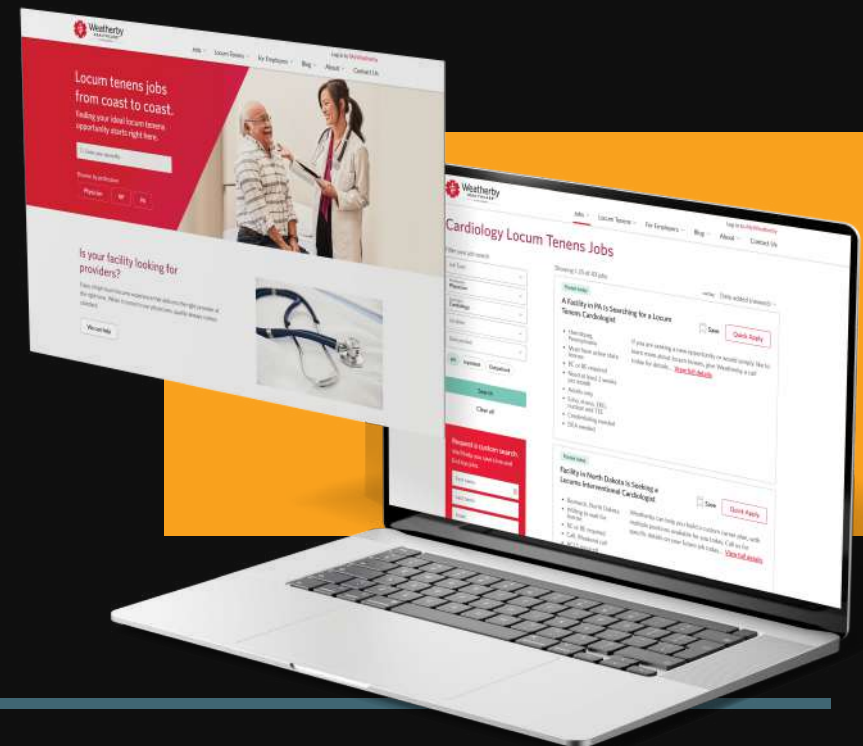
Team PM BA UI/UX Frontend Backend DB DevOps QA

## Job Portal



An online job portal (Web and Mobile App) employing a match-making approach for both job seekers and employers. The platform is centrally controlled by product owners (confidential) with sub-controls at the Country and Employer levels. The Platform incorporates AI-based dashboards on the Admin side; offering features such as Predictive Analysis, Decision-making Systems, Financial Management, Profile Handling and much more, all based on real-time integrated data.

Team: PM BA SA UI/UX Frontend Backend  
DB Android Dev iOS Dev DevOps QA



## Task Tracking System



Recognizing the fundamental requirement for organizations to have real-time monitoring and evaluation of onboarded resources, a solution has been crafted and introduced. One may characterize the system in question as resembling JIRA; in reality, it incorporates more features and can be customized according to the specific needs of any client.

Team	PM	BA	SA	UI/UX	Frontend	Backend
	DB	Android Dev	iOS Dev	DevOps	QA	



## AI Based Decision Making Solutions

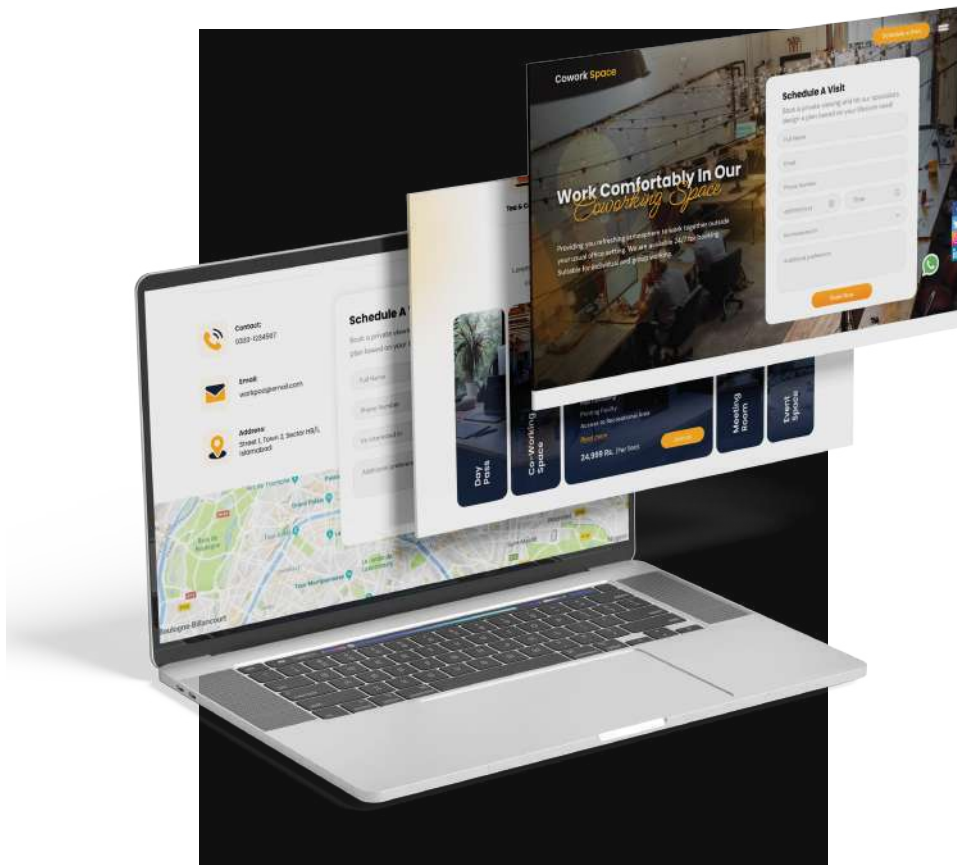


In the times of the COVID-19 pandemic and past floods in Pakistan, multiple dashboards were created and launched for a national cause; MAE Tech provided maximum input in this regard which includes smart lockdowns, hot spot mapping, geo-fencing of highly affected areas, layering over effected areas, relief activities and many more.

During floods these dashboards offer real-time analysis of total deaths, hospital stock and updates, information on injured individuals, livestock loss, damaged houses and affected people. They also include real time details on relief granted and aids distributed.

Decision-making became simplified with real-time comparisons at the fingertips of decision-makers, fostering transparency and effectiveness.

Team	PM	BA	SA	UI/UX	Frontend	Backend	Data Science	AI Developer	DB	DevOps	QA
------	----	----	----	-------	----------	---------	--------------	--------------	----	--------	----



## Platform for Co-working Space



A platform where all services offered by space providers are published. Visitor can have virtual visit of whole vicinity and can schedule a visit. Those who are registered can have access to e-invoice, Complaints Management, Events Management, Guests Management and many more. On admin side their whole business process is digitized; including HR, Admin, Marketing, Operations and Finance departments.

Team PM BA SA UI/UX Frontend Backend DevOps QA

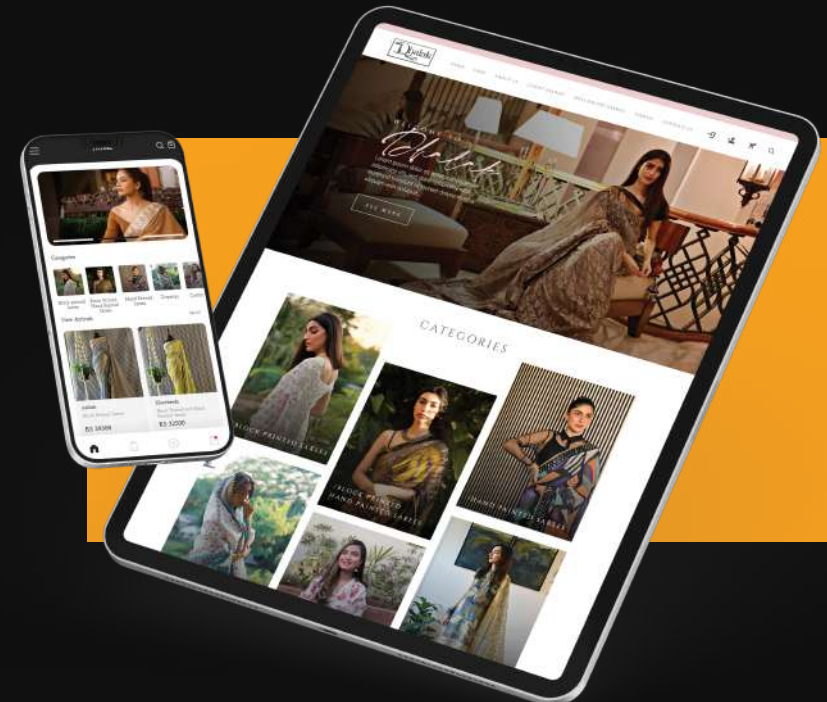
## e-Commerce



An e-commerce platform for a Saaree brand, featuring a dynamic content management system (CMS) for online showcasing. Users can explore multiple options, add items to their cart and complete online payments when confirming an order. The system includes a Complaint Management System and an e-Ledger, along with other fundamental operational processes.

Team

PM BA SA UI/UX Frontend Backend  
DB Android Dev iOS Dev DevOps QA



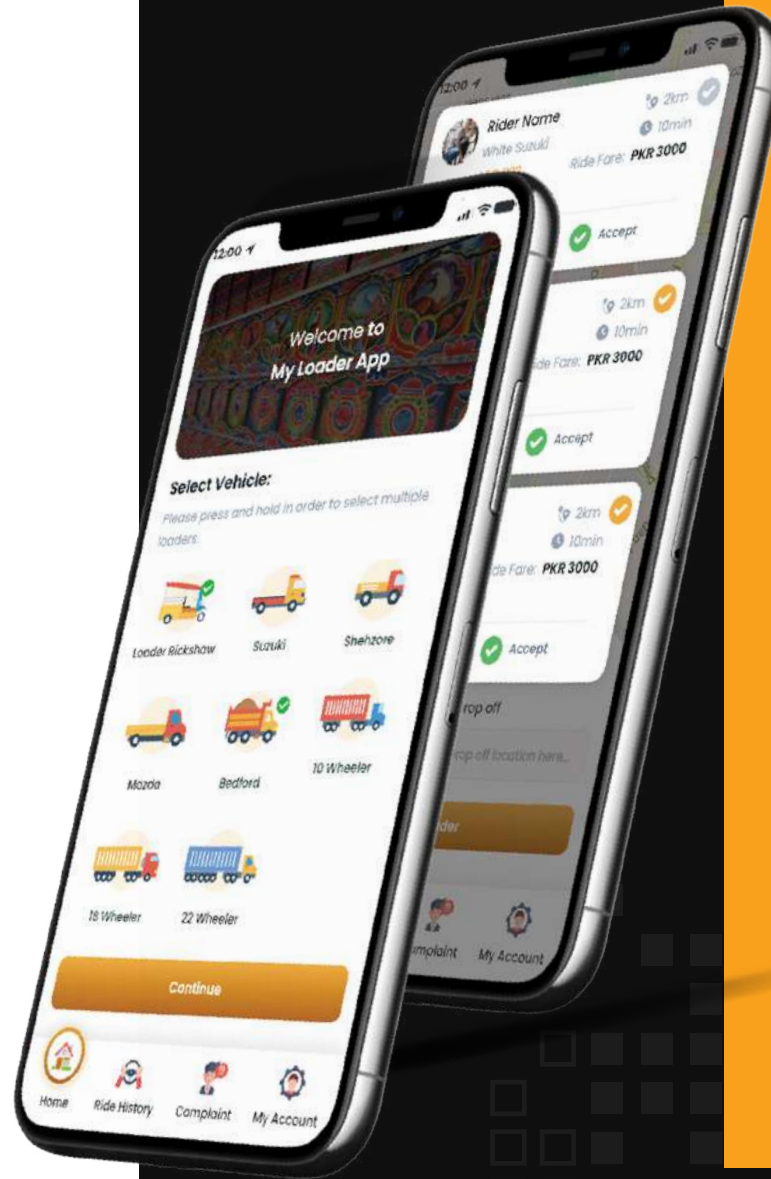
## My Loader App



My loader app is a platform for loader vehicles of all cargo categories and end users who wants to get his cargo shifted from one place to another. Said Platform makes its very simple for domestic users to book a cargo vehicle by using this app from thousands of vehicles available in this surroundings instantly or schedule it for some other time. My loader app provides a facility where the user and vehicle owner can negotiate the fair that suits both parties.

Team

PM	BA	SA	UI/UX	Frontend	Backend
DB	Android Dev	iOS Dev	DevOps	QA	





## Resource Management System



A comprehensive Platform (accessible through both Web and Mobile App) allowing organizations and employees to engage in immediate online coordination. It encompasses features like HR Management System, Payroll Management System, Attendance Management System (usable on smartphones, with location-based application limited to defined premises) and various other routine operational business processes.

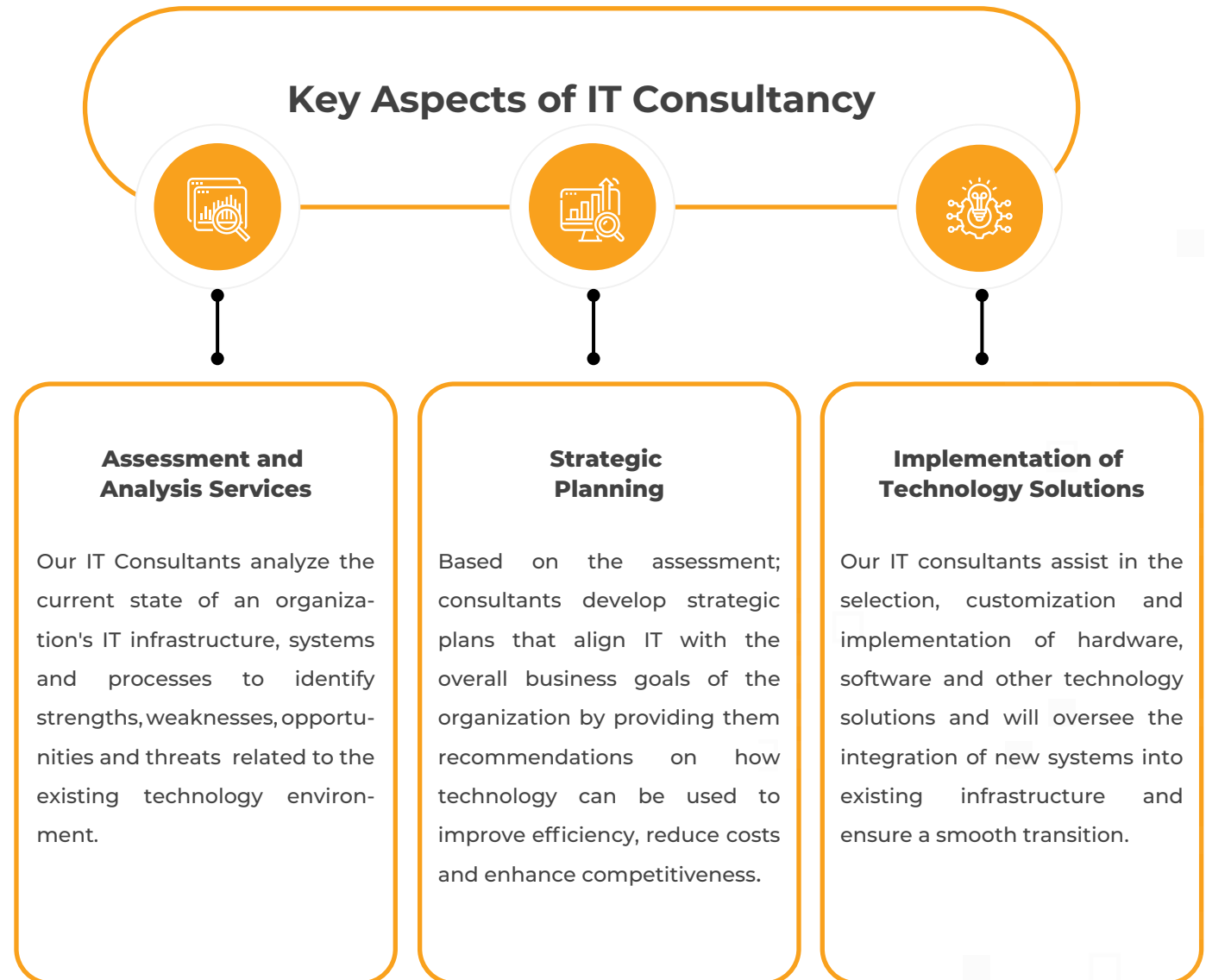
Team

PM	BA	SA	UI/UX	Backend	DB
Android Dev	iOS Dev	DevOps	QA		



## IT Consultancy

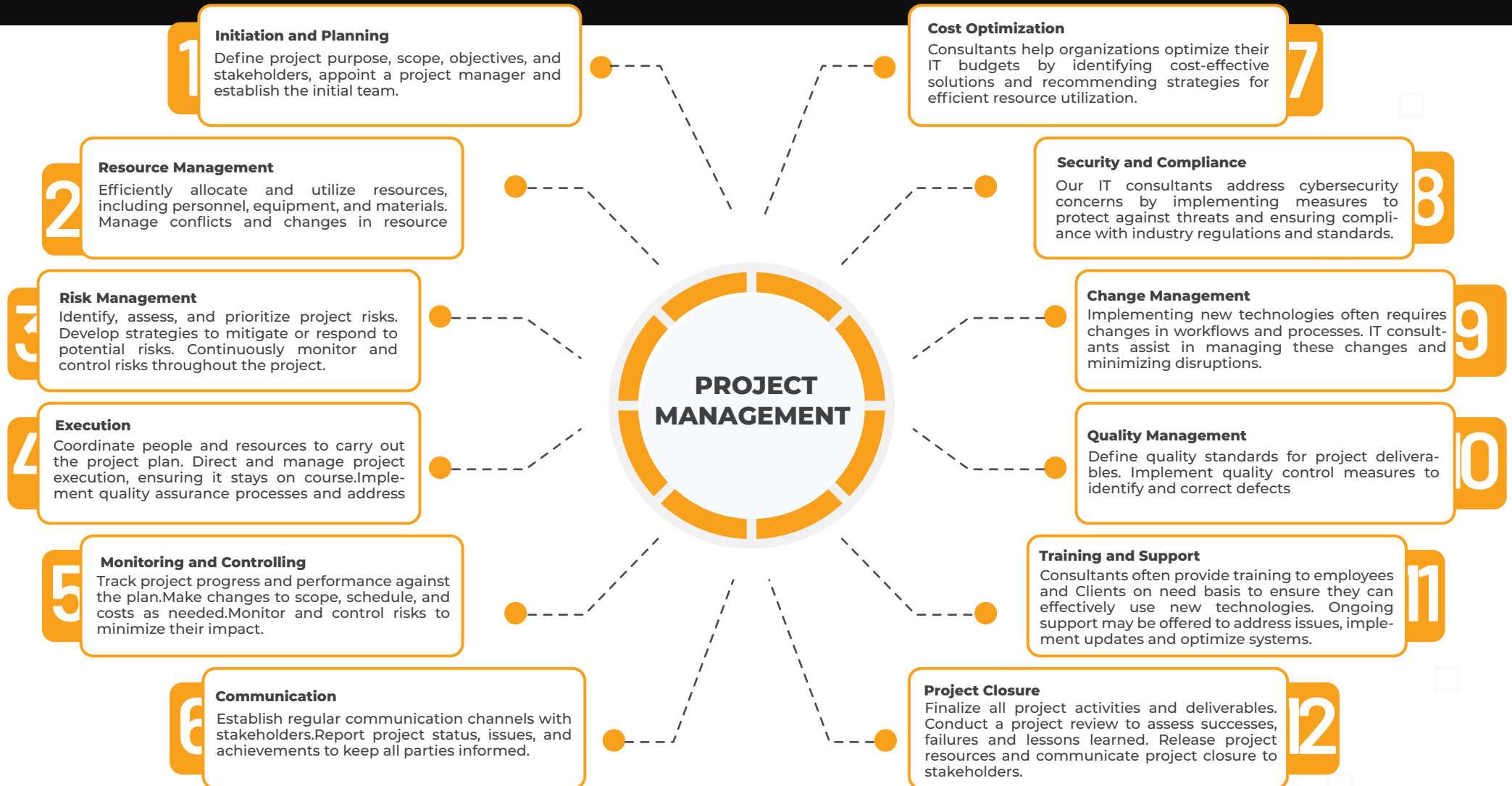
MAE Tech excels in providing IT consultancy as a professional service to provides advice, guidance and solutions to organizations seeking to leverage information technology to achieve their business objectives. MAE Tech family owns expert IT consultants who work closely with clients to assess their IT needs, develop strategies and implement solutions.





# Project Management

Project management is a systematic approach involving planning, execution, control, and closure to meet project requirements. It employs various methodologies (e.g., Agile, Scrum, Waterfall, PRINCE2) based on project nature and preferences. Successful project management is crucial for on-time, within-budget, and quality delivery, requiring technical skills, leadership, communication, and adaptability to handle complexities. Here are key aspects of project management we suggest and follow:

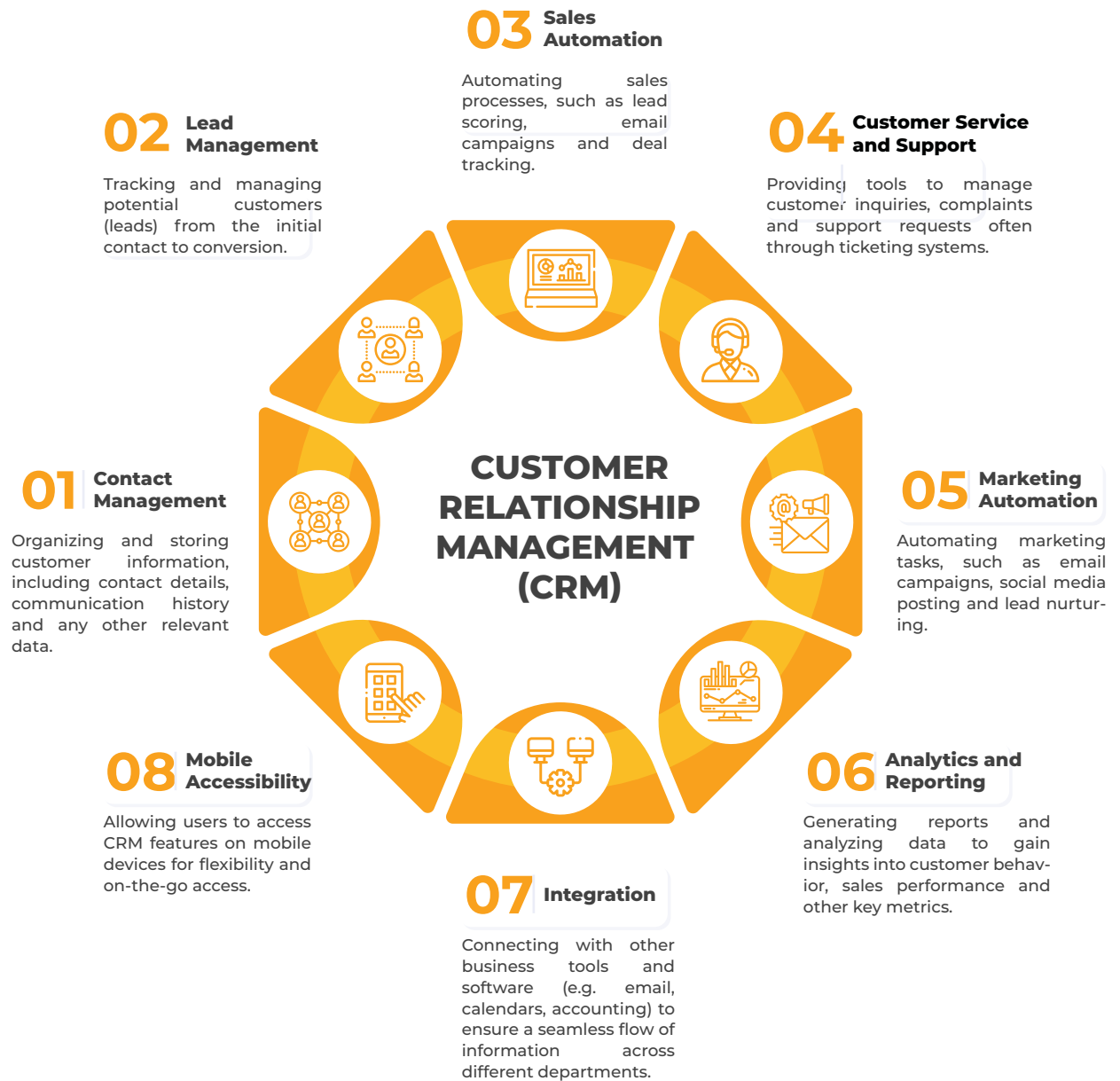


## Customer Relationship Management

CRM (Customer Relationship Management) MAE Tech excels in providing off the shelf and customized purpose built CRM solutions. A CRM solution is a technology tool or software designed to help businesses manage and analyze customer interactions and data throughout the customer lifecycle.

The primary goal of a CRM solution is to improve customer relationships, streamline processes, and increase profitability. Key features of a CRM solution typically include:

Here are key aspects of project management we suggest and follow:



# Risk Assessment Strategy

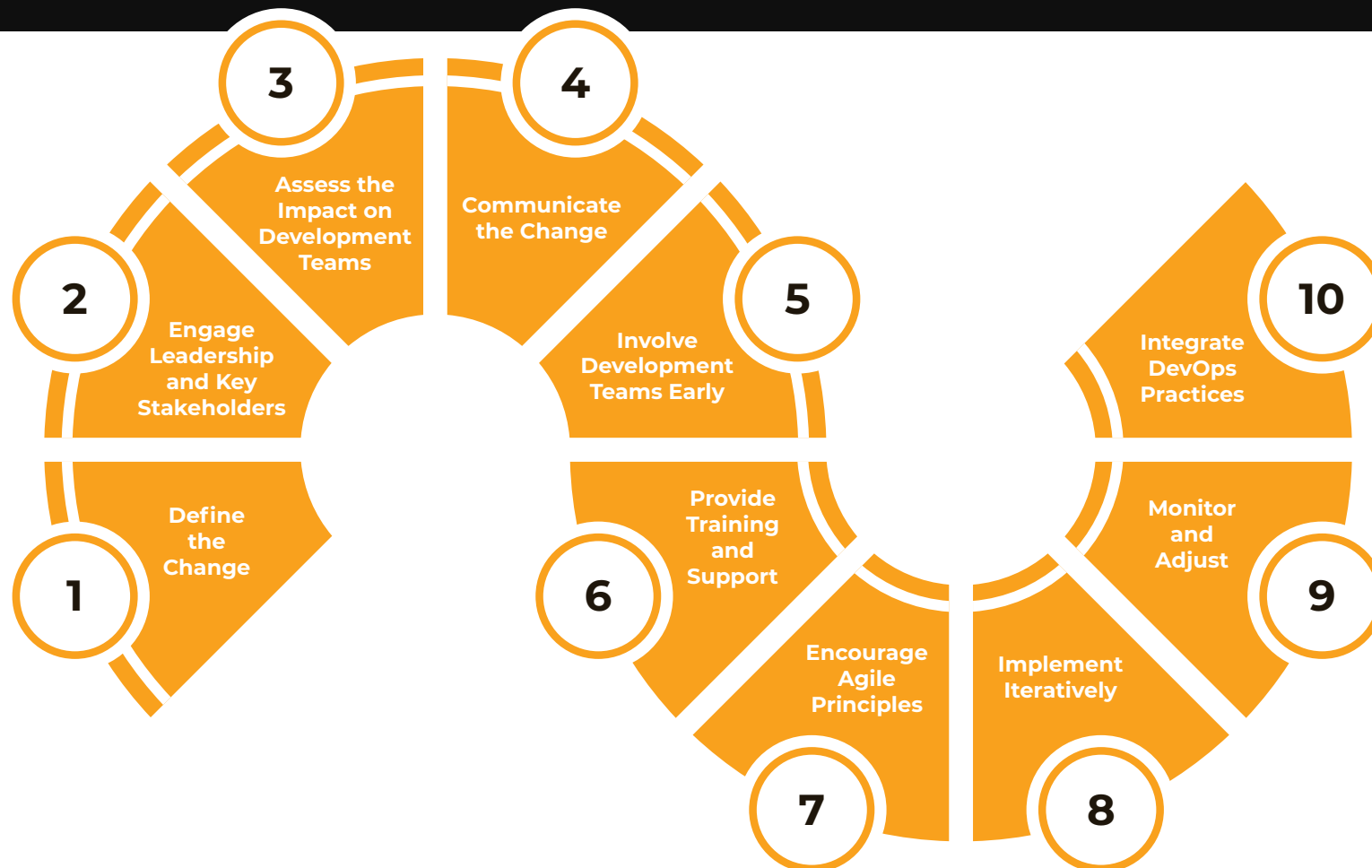
A Risk Assessment Plan is a structured document that outlines the process, methods and tools used for identifying, assessing and managing risks within a project or organization. Creating a risk assessment plan with a mitigation plan involves identifying potential risks, assessing their impact and likelihood and developing strategies to minimize or eliminate these risks.



## Change Management Approach

Change management is a structured approach to transitioning individuals, teams and organizations from the current state to a desired future state while minimizing resistance and maximizing engagement. When considering a change management approach, it's important to follow a systematic process to increase the likelihood of successful implementation of any Digital Platform on launch. Implementing a change management approach in software development is crucial for the successful adoption of new processes, tools or methodologies.

Here's a tailored change management approach specifically for software development:





[www.maetech.co](http://www.maetech.co)



[info@maetech.co](mailto:info@maetech.co)



Plot # D-643/7, Rawat,  
Islamabad, Pakistan

Office # 701, Axis 6,  
Dubai Silicon Oasis, Dubai